

DS-7304/7308/7316HI-ST Standalone DVR

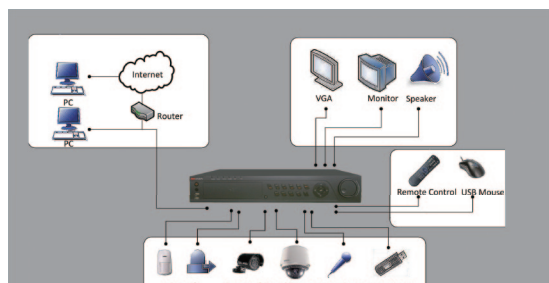
Specifications

	DS-7304HI-ST	DS-7308HI-ST	DS-7316HI-ST
Video / Audio input			
Video compression	H.264		
Analog video input	4-ch, BNC (1.0 Vp-p, 75 Ω), PAL / NTSC self-adaptive	8-ch, BNC (1.0 Vp-p, 75 Ω), PAL / NTSC self-adaptive	16-ch, BNC (1.0 Vp-p, 75 Ω), PAL / NTSC self-adaptive
Audio compression	G.711		
Audio input	4-ch, RCA (2.0 Vp-p, 1 kΩ)		
Voice talk input	1-ch, RCA (2.0 Vp-p, 1 kΩ)		
Video / Audio output			
HDMI output (with HDMI audio output)	1-ch, resolution: 1080P:1920×1080 /60 Hz; UXGA: 1600×1200 /60 Hz; SXGA: 1280×1024 /60 Hz; 720P:1280×720 /60 Hz; XGA: 1024×768 /60 Hz.		
VGA output	1-ch, resolution: 1080P:1920×1080 /60 Hz; UXGA: 1600×1200 /60Hz; SXGA: 1280×1024 /60 Hz; 720P:1280×720 /60 Hz; XGA: 1024×768 /60 Hz.		
CVBS output	2-ch (1 Main Video Out+1 Spot Video Out), BNC (1.0 Vp-p, 75 Ω), resolution: PAL: 704×576, NTSC: 704×480		
Video loop out (optional)	4-ch	8-ch	16-ch
Encoding resolution	4CIF / 2CIF / CIF / QCIF		
Frame rate	Mode1: 4CIF @ 15 fps or 2CIF / CIF / QCIF @ 25 fps (P) / 30 fps (N) Mode2: 1-ch: 4CIF / 2CIF / CIF / QCIF @ 25 fps (P) / 30 fps (N), 3-ch: CIF / QCIF @ 25 fps (P) / 30 fps (N)	Mode1: 4CIF @ 12 fps or 2CIF / CIF / QCIF @ 25 fps (P) / 30 fps (N) Mode2: 2-ch: 4CIF / 2CIF / CIF / QCIF @ 25 fps (P) / 30 fps (N), 6-ch: CIF / QCIF @ 25 fps (P) / 30 fps (N)	Mode1: 4CIF @ 12 fps or 2CIF / CIF / QCIF @ 25 fps (P) / 30 fps (N) Mode2: 4-ch: 4CIF / 2CIF / CIF / QCIF @ 25 fps (P) / 30 fps (N), 12-ch: CIF / QCIF @ 25 fps (P) / 30 fps (N)
Video bit rate	32 Kbps ~ 2048 Kbps, or user defined (Max. 3072 Kbps)		
Audio output	2-ch, RCA (Linear, 600 Ω)		
Audio bit rate	64 Kbps		
Dual-stream	Support Sub stream: CIF / QCIF		
Stream type	Video, Video & Audio		
Playback resolution	4CIF / 2CIF / CIF / QCIF		
Synchronous playback	4-ch	8-ch	16-ch
Hard disk			
SATA	4 SATA interfaces		
eSATA	1 eSATA interface		
Capacity	Up to 4TB capacity for each disk		
External interface			
Network interface	1, RJ45 10M / 100M self-adaptive ethernet interface		
Serial interface	1 RS-232 interface (for parameters configuration, maintenance, transparent channel); 1 RS-485 interface (for PTZ control); 1 RS-485 keyboard interface (for special keyboard control)		
USB interface	3, USB2.0		
Alarm in	8	8	16
Alarm out	4	4	4
General			
Power supply	100 ~ 240 VAC, 5A, 50-60Hz		
Consumption	≤ 25W (without hard disk or DVD-R/W)	≤ 30W (without hard disk or DVD-R/W)	≤ 35W (without hard disk or DVD-R/W)
Working temperature	-10 °C ~ +55 °C		
Working humidity	10% ~ 90%		
Chassis			
Dimensions (W x D x H)	440 × 390 × 70 mm		
Weight	≤ 8kg (without hard disk or DVD-R/W)		

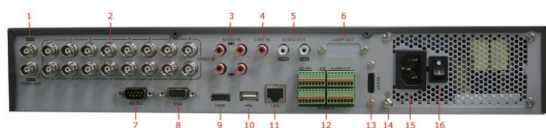


Key Features

- H.264 video compression
- HDMI and VGA output at 1920×1080P resolution
- Smart searching for motion event
- eSATA interface
- 4/8/16-ch synchronous playback
- SADP (IP Finder), SMTP, IPv6, SNMP, FTP, NFS, NTP, iSCSI protocols



Rear Panel of DS-7316HI-ST



1. Main video out, spot video out
2. Video in
3. Audio in
4. Line in
5. CVBS audio out, vga audio out
6. Loop out
7. RS-232 interface
8. VGA
9. HDMI
10. USB
11. LAN interface
12. RS-485 serial interface, keyboard interface, alarm in, alarm out
13. eSATA interface
14. GND
15. 100-240 VAC power input
16. Power switch